



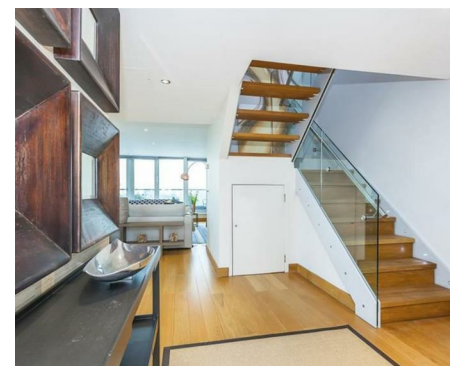
NEWINGTON
LONDON

2 Bedrooms

Apartment

Located in London

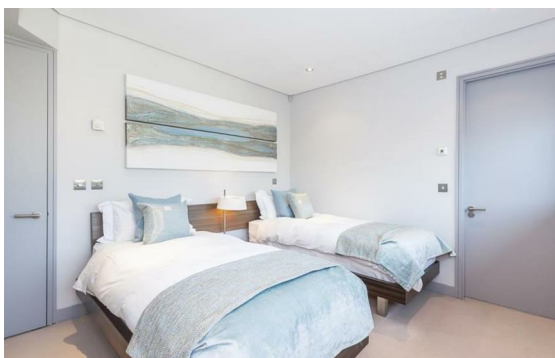
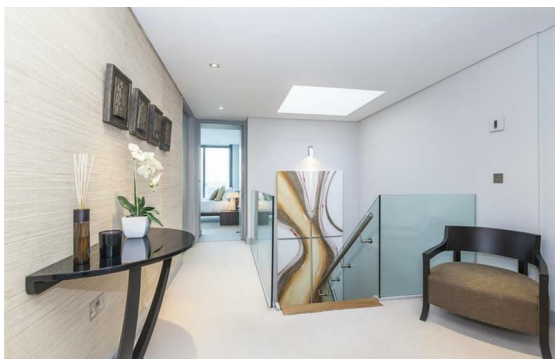
£1,200 Per Month



info@newingtonstates.com

<http://www.newingtonstates.com>

020 7724 2233



NEWINGTON LONDON

60 Upper Montagu Street

London

W1H 1SN

020 7724 2233

info@newingtonestates.com

Newington Estates are delighted to present an extremely spacious two bedroom two bathroom apartment situated on within this luxury apartment block in a quiet street just behind Covent Garden's Piazza, a stone's throw from the heart of London's entertainment and shopping centre.

The property comprises a large bright reception room with real wood floors, smart kitchen with marble surfaces and all the usual mod cons including dishwasher and washer-drier, master bedroom with large ensuite bathroom, second large double bedroom with additional built in storage, main bathroom with bath and shower. EPC RATING: C

Energy Efficiency Rating:

Agents Note: Whilst every care has been taken to prepare these particulars, they are for guidance purposes only. All measurements are approximate and are for general guidance purposes only and whilst every care has been taken to ensure their accuracy, they should not be relied upon and potential buyers/tenants are advised to recheck the measurements.

<http://www.newingtonestates.com>